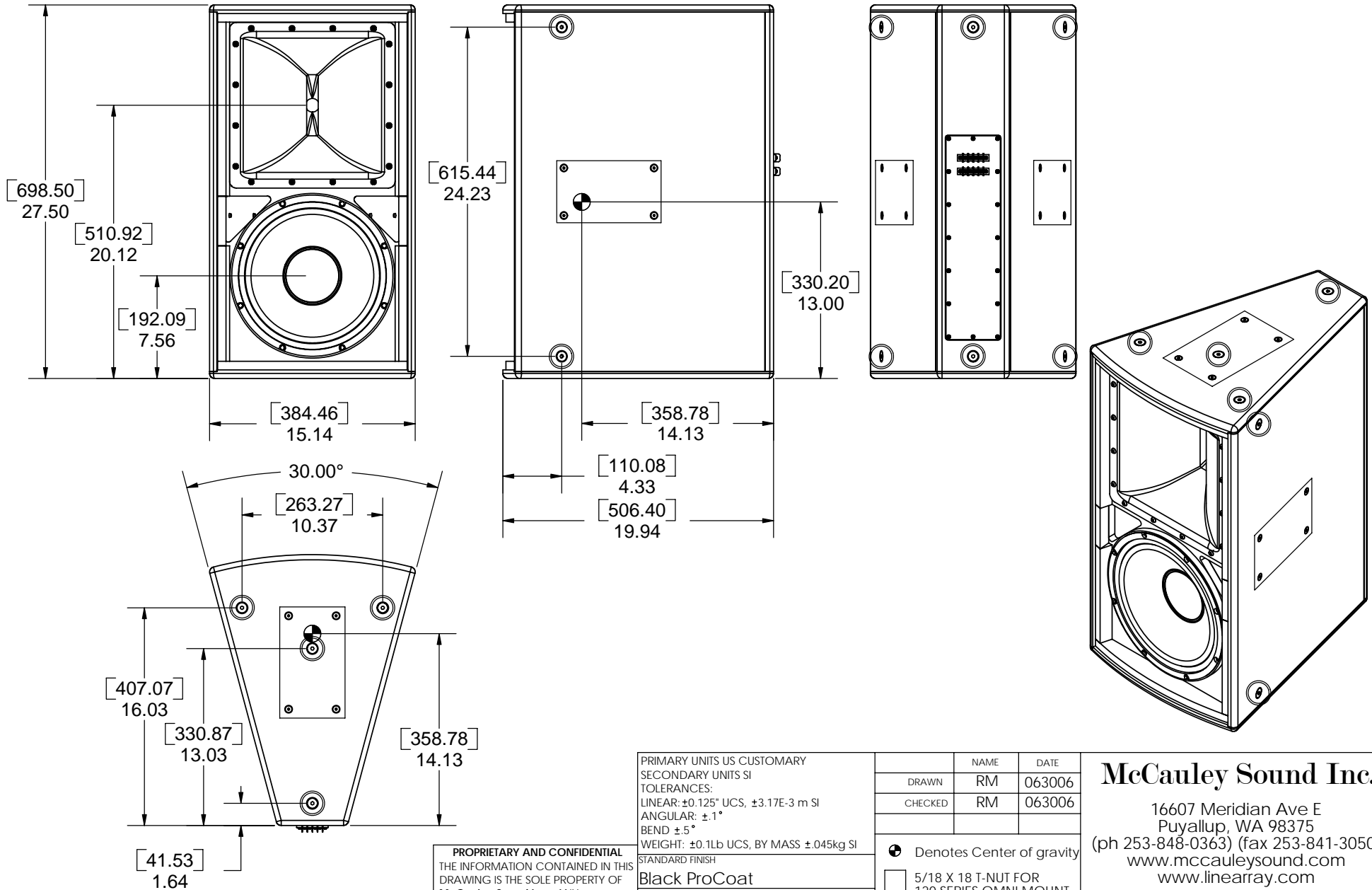


**NOTES:**

- A. CABINET WEIGHT 71.0 LBS [ 32.25 KG ]
- B. SHIPPING WEIGHT 80.0 LBS [ 36.35 KG ]

		REVISIONS			
ZONE	REV.	DESCRIPTION	DATE	APPROVED	



**PROPRIETARY AND CONFIDENTIAL**  
 THE INFORMATION CONTAINED IN THIS DRAWING IS THE SOLE PROPERTY OF McCauley Sound Inc. ANY REPRODUCTION OF SAID PRODUCT, IN PART OR AS A WHOLE WITHOUT THE WRITTEN PERMISSION OF McCauley Sound Inc. IS PROHIBITED.

PRIMARY UNITS US CUSTOMARY  
 SECONDARY UNITS SI  
 TOLERANCES:  
 LINEAR: ±0.125" UCS, ±3.17E-3 m SI  
 ANGULAR: ±.1°  
 BEND ±.5°  
 WEIGHT: ±0.1lb UCS, BY MASS ±.045kg SI  
 STANDARD FINISH  
**Black ProCoat**  
 OPTIONAL FINISHES  
**White**  
 ORDERING OPTIONS  
**P, PW, W**

	NAME	DATE
DRAWN	RM	063006
CHECKED	RM	063006

● Denotes Center of gravity  
 □ 5/18 X 18 T-NUT FOR 120 SERIES OMNI MOUNT  
 ○ 3/8 X 18 FLY POINT  
 DRAWING NOT TO SCALE

**McCauley Sound Inc.**  
 16607 Meridian Ave E  
 Puyallup, WA 98375  
 (ph 253-848-0363) (fax 253-841-3050)  
 www.mccauleysound.com  
 www.linearray.com

SIZE	A	ID2.112-96	REV.	1
------	---	------------	------	---

Thursday, June 29, 2006 11:54:02 AM